

Differential Skid Plate Kit

2020-2025 GM 2500HD/3500HD Skid Plate Kit (0-3" Non-Crossmember Kits)

Part #: 121256

Rev. 072925



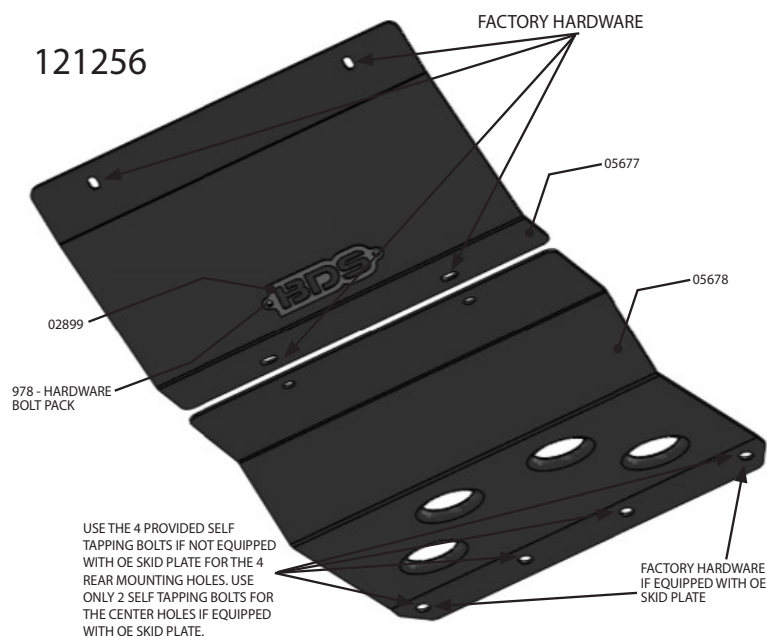
491 W. Garfield Ave., Coldwater, MI 49036 • Phone: 517-279-2135

Web/live chat: www.bds-suspension.com • E-mail: tech-bds@ridefox.com

SAFETY WARNING

BDS Suspension Co. recommends this system be installed by a professional technician. In addition to these instructions, professional knowledge of disassembly/ reassembly procedures and post installation checks must be known.

Box Kit		
Part #	Qty	Description
05677	1	GM HD 3" Differential Skid Plate
05678	1	GM HD 3" Splash Shield Replacement
B1686	1	Bag Kit - Skid Plate (Contains 02899, 978, BP1096)
02899	1	BDS Badge
978	1	Bolt Pack
	2	1/4"-20 x 3/4" BHSCS (button head allen Bolt) - 18-8 Stainless Steel
	2	1/4" SAE Washer, Clear Zinc
	2	1/4"-20 NyLock Nut, Clear Zinc
BP1096	1	Bolt Pack
	4	3/8"-16 x 1" Self Tapping Bolt Hex Head, Type 23, Clear Zinc
	4	3/8" USS Washer, Clear Zinc



INSTALLATION INSTRUCTIONS

1. Park vehicle on clean, flat, and level surface. Set the parking brake.
2. Remove the factory splash shield and factory differential skid plate. qty 8 - 15mm Bolts from both skid plates. Retain all hardware. (Fig. 1, 2)

FIGURE 1

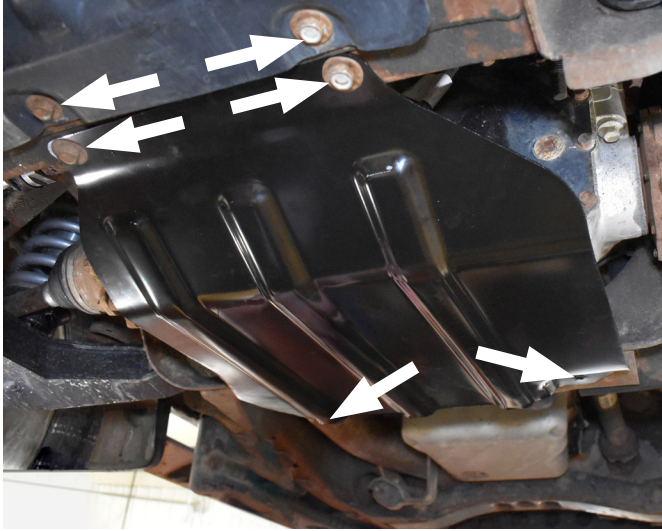


FIGURE 2



3. Bolt the BDS logo onto the splash guard with hardware from #978, the washer goes with the 1/14" nut on the backside. Do not put a washer on the 1/4" button head side. Tighten to 18 ft-lbs. (Fig. 3)

FIGURE 3



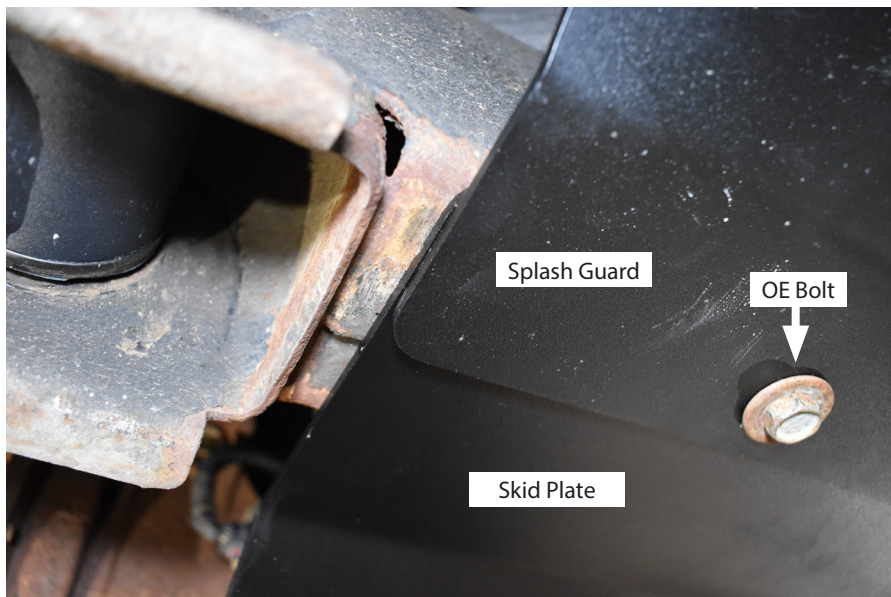
4. Install front splash guard to the front most holes first, leave them loose. (Fig. 4)

FIGURE 4



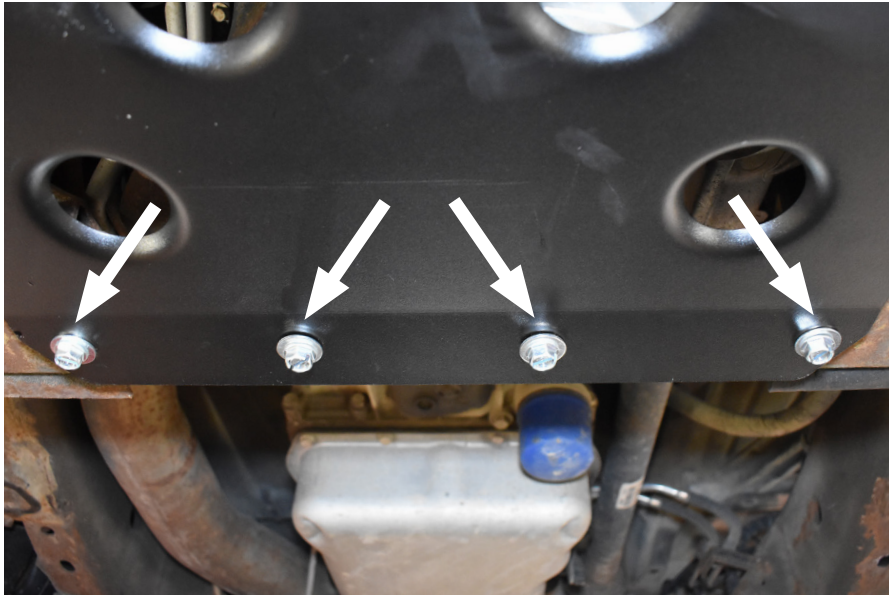
5. Place skid plate under the rear of the splash guard, installing the OE bolts through the splash guard, skid plate then into the cross member. Install both bolts and leave loose. (Fig. 5)

FIGURE 5



6. If not equipped with rear factory skid plate use the provided 4 self tapping bolts in the existing crossmember holes. If equipped with factory skid plate, re- use the 2 OE bolts in the 2 outside holes and 2 self tapping bolts for the 2 inside holes. (Fig. 6)

FIGURE 6



7. Tighten all hardware.
8. Re-Check and tighten at 500 miles.