



DIRECT-REPLACEMENT
INSTALLATION AND SET-UP GUIDE

INDIAN SCOUT FORK CARTRIDGE KIT

STREET PERFORMANCE SERIES CARTRIDGE KITS

890-25-001 - Kit: Indian, AM, Scout STD, GRIP Fork Cartridge, 41 mm

605-01-449 REV A



FOX products are subject to continuous development and improvement. To find the most up to date product information such as color installation manuals, videos, and FAQs please visit:

tech.ridefox.com/manuals

To locate the correct installation manual, use the 8-digit part number found on the end of the packaging box (see illustration below):



CONTENTS

INTRODUCTION	1
SAFETY INSTRUCTIONS	2
INSTALLATION GUIDELINES	3
KIT CONTENTS	4
COMPATIBILITY CHART	5
FORK DISASSEMBLY	6
FORK REASSEMBLY	9
MAINTENANCE	15
WARRANTY INFORMATION	16

INTRODUCTION

Thank you for choosing FOX direct-replacement cartridge kit for your motorcycle. FOX products are designed, tested, and manufactured by the finest professionals in the industry.

WARNING

- Please read the entire manual before attempting to install the cartridge kit on your motorcycle. When working on this product, always see the vehicle manufacturer's work shop manual for vehicle-specific procedures and important specifications. Be sure to clean the components you intend to modify to avoid contamination or damage during the installation process. If you have any questions call the FOX motorcycle shock service center at 831.740.4619.
- To achieve the best performance and product longevity, periodic service and maintenance is required. Please refer to the MAINTENANCE section for more information.
- Always use a calibrated torque wrench when tightening components. Failure to properly torque the parts can result in separation of the fork, which could cause loss of control resulting in a crash, bodily injury, or death!
- Always use the appropriate lift equipment to ensure the vehicle is securely supported so that it will not tip. Placing body parts beneath an unstable vehicle may lead to serious injury or death.
- It is advisable to have a professional motorcycle mechanic install the cartridge kit. In addition to these instructions, professional knowledge of disassembly/reassembly procedures and post installation checks must be known.
- FOX recommends that you become thoroughly familiar with the handling characteristics of your modified vehicle before operating it under rigorous conditions. this will help to avoid potential loss of control events that could lead to serious injury or death. FOX further recommends that you use appropriate protective equipment at all times when operating your vehicle.

WARNING

SAFETY INSTRUCTIONS

- FOX direct-replacement cartridge kits are designed to fit and allow proper clearance with the stock components. If aftermarket suspension components are installed it is the customer's responsibility to ensure that interference between the FOX cartridge kit and other motorcycle fork components does not occur at any point in the fork stroke.
- FOX direct-replacement cartridge kits should always be installed as a set for maximum performance.
- Proper installation and service procedures are essential for the safe and reliable operation of the suspension components, requiring the experience and tools specially designed for this purpose. Installation and maintenance procedures for this product must be performed by a qualified service technician, to avoid potentially unsafe motorcycle handling characteristics, which may result in SERIOUS INJURY or DEATH.
- Adjusting your suspension will change the handling characteristics of your motorcycle. Under certain conditions, your adjusted motorcycle may be more susceptible to loss of control, which can result in SERIOUS INJURY or DEATH. Thoroughly familiarize yourself with the adjusted motorcycle handling characteristics before any rigorous vehicle operation. Wear protective body gear and a helmet when appropriate.
- Any attempt to misuse, misapply, modify, or tamper with any FOX product voids any warranty and may result in SERIOUS INJURY or DEATH.
- The springs are coated with a corrosion-resistant oil that requires eye protection and gloves for safe handling. Wear safety glasses and rubber gloves when disassembling and reassembling fork legs as they are under spring tension and contain oil. Avoid contact with eyes and skin. Do not ingest and avoid repeated inhalation of vapor.

FIRST-AID MEASURES:

INHALATION: Move person to fresh air. If not breathing, give artificial respiration. If a problem develops or persists, seek medical attention.

SKIN CONTACT: Wash skin with warm water and mild soap. Remove contaminated clothing and wash before reuse. If a problem develops or persists, seek medical attention. Discard contaminated leather articles such as shoes and belt.

EYE CONTACT: Flush with water for at least 15 minutes. Remove contact lenses if easy to do. Hold eyelids apart to rinse properly. If a problem develops or persists, seek medical attention.

INGESTION: DO NOT INDUCE VOMITING! Never give anything by mouth if victim is unconscious or convulsing. If spontaneous vomiting occurs, keep head below hip level to prevent aspiration into the lungs. Seek medical attention or contact POISON CENTER immediately.

WARNING

INSTALLATION GUIDELINES

- Please read the instruction manual completely before attempting to install your cartridge kit. When working on this product, always see the vehicle manufacturer's work shop manual for vehicle specific procedures and important specifications. Be sure to clean the components you intend to modify to avoid contamination or damage during the installation process. DO NOT install any FOX product without the necessary special tools, expertise, and equipment, or you will subject yourself to the risk of SERIOUS INJURY or DEATH.
- Always use a calibrated torque wrench when tightening components. Failure to properly torque the parts can result in separation of the fork which could cause loss of control resulting in a crash, bodily injury, or death!
- Always use the appropriate lift equipment and ensure the vehicle is securely supported so that it will not tip. Placing body parts beneath an unstable vehicle may lead to serious injury or death.
- It is advisable to have a professional motorcycle mechanic install the cartridge kit. In addition to these instructions, professional knowledge of disassembly/reassembly procedures and post installations checks must be known.
- The top cap may come out with more force than you expect, which can cause bodily injury. Keep your body and face, along with all other objects, out of the path of the top cap as it is removed.
- Take care when clamping the fork into a fork vise or bench vise, as damage can occur.
- The cartridge assembly will be installed into the right (throttle side) fork leg.

TOOLS REQUIRED

- Gloves
- Safety glasses
- Isopropyl alcohol
- Vehicle manufacturer's workshop manual for torque specifications
- Assorted sockets, ratchets, Allen bits, and Torx® bits for fork removal and installation
- Torque wrench
- Fork vise
- Bench vise
- 8 mm long Allen bit
- 8 mm Allen wrench
- 13 mm socket and extensions
- 30 mm socket
- 1 quart FOX 5WT PTFE infused suspension fluid (included)
- Graduated cylinder (or container) for measuring fork oil

Required tools and supplies may change over time. Visit ridefox.com or contact a representative for the most up-to-date details.

Torx® is a registered trademark of Acument Intellectual Properties, LLC

KIT CONTENTS

INSTRUCTIONS COVER KIT LISTED BELOW:

890-25-001 - Kit: Indian, AM, Scout STD, GRIP Fork Cartridge, 41 mm



COMPATIBILITY CHART

MAKE	PLATFORM	MODEL NAME	STARTING YEAR	ENDING YEAR	FORK DIAMETER
Indian	Scout	Bobber Scout	2022	Current*	41 mm
		Classic Scout	2025	Current*	
		Sport Scout	2025	Current*	
		Super Scout	2025	Current*	
		Scout	2015-2016 and 2023-2024 ONLY		
		Bobber Sixty	2020	2024	
		Rogue	2022	2024	
		Rogue Sixty	2022	2024	
		Scout Sixty	2016	2024	
		Scout 1200	*2017 and 2022 ONLY		

*As of Oct 2025

NOTICE

If you can not find your motorcycle listed above please contact FOX Service Center at **1.831.740.4619** or service@ridefox.com to check your fitment.

FORK DISASSEMBLY

STREET PERFORMANCE SERIES SCOUT CARTRIDGE KIT INSTALLATION

⚠ WARNING: The springs are coated with a corrosion-resistant oil that requires eye protection and gloves for safe handling. Wear safety glasses and rubber gloves when disassembling and reassembling fork legs as they are under spring tension and contain oil. Avoid contact with eyes and skin. Do not ingest and avoid repeated inhalation of vapor.

NOTE: All fork disassembly instructions are repeated for the second fork leg.

1. Remove the fork legs from your motorcycle according to your vehicle manufacturer's workshop manual and secure them in a fork clamp.
2. Clamp the fork in fork vise, then use a 30 mm socket to loosen the top cap (Fig. 1). Keep downward force on the top cap and tool while unthreading the cap

NOTICE: Use care when clamping not to damage fork leg.

3. Carefully remove the top cap, keeping your body and other objects out of the path of the cap (Fig. 2).

⚠ WARNING: The top cap may come out with more force than you expect, which can cause bodily injury. Keep your body and face, along with all other objects, out of the path of the top cap as it is removed.

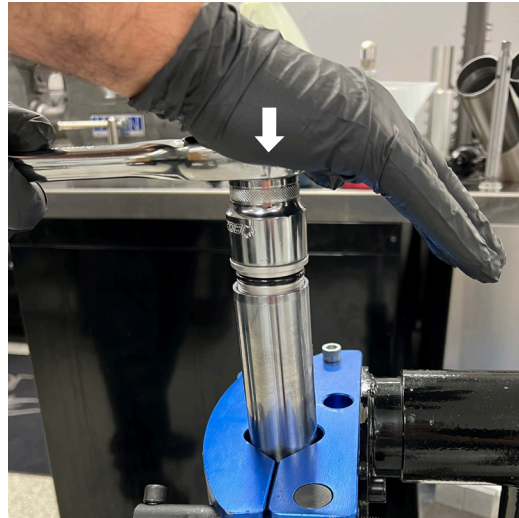


Fig. 1: Loosen the top cap. Apply downward force while unthreading the top cap



Fig. 2: Carefully remove the top cap.

4. Remove the stock preload spacer (Fig. 3).
5. Remove the stock spring washer (Fig. 4).
6. Remove the stock spring (Fig. 5).

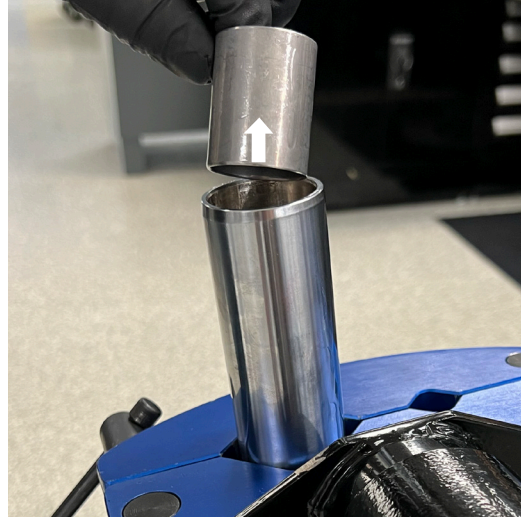


Fig. 3: Remove the preload spacer.

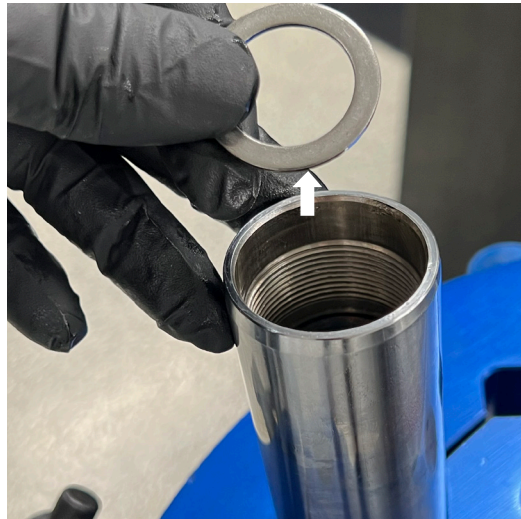


Fig. 4: Remove the spring washer.



Fig. 5: Remove the spring.

7. Fully compress the fork several times, while holding it upside down, to drain the oil into a clean container. Clamp the lower portion of the fork leg in a vise with access to the lower retaining screw (Fig. 6).

NOTICE: Use care when clamping not to damage the fork leg.

8. Use a 8 mm Allen wrench to remove the damping post retaining screw (Fig. 6). Apply pressure to the damping post with the main spring to keep the post from rotating inside the leg as you remove the retaining screw.

TIP: If the retaining screw rotates but won't unthread, put the main spring and top cap back in to provide sufficient force to remove the retaining screw.

9. Compress the fork to hold the bottom-out cup in place. Turn the fork upside down to remove the damping post and negative spring (Fig. 7).

TIP: Use a flathead screwdriver to pry the damping post and negative spring, if needed (Fig. 8).

10. Repeat for the other fork leg (not pictured).



Fig. 6: Clamp the lower portion of the fork and remove the retaining screw.



Fig. 7: Remove the damping post and negative spring.



Fig. 8: Pry the damping post and negative spring, if needed.

FORK REASSEMBLY

LEFT LEG (CLUTCH SIDE)

1. Ensure that you can see a circle of light through the hole in the bottom of the left fork leg, which indicates that the bottom out cup is seated correctly (Fig. 9).

TIP: Make sure the fork stays compressed throughout the assembly procedure so the bottom out cup stays seated.

2. Install the negative spring onto the extender post and slide both into the fork leg (Fig. 10). **NOTE:** Use the stock negative spring that came on the bike. **Do NOT** install the cartridge assembly, which will go in the opposite (right) fork leg. Make sure to install the negative spring in the correct orientation (Fig. 11) and prevent the incorrect orientation (Fig. 12).

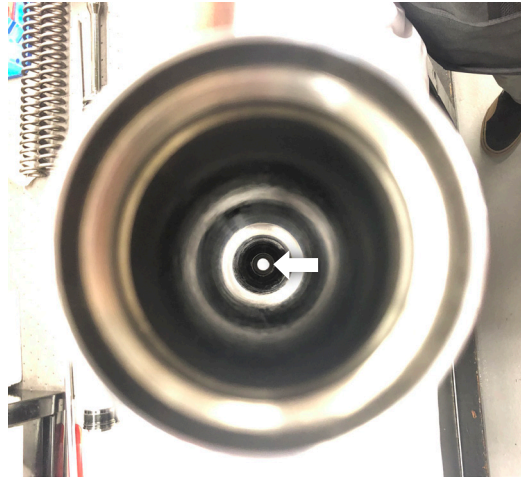


Fig. 9: Light through the hole in fork leg.



Fig. 10: Install spring and post.



Fig. 11: Correct orientation of negative spring.

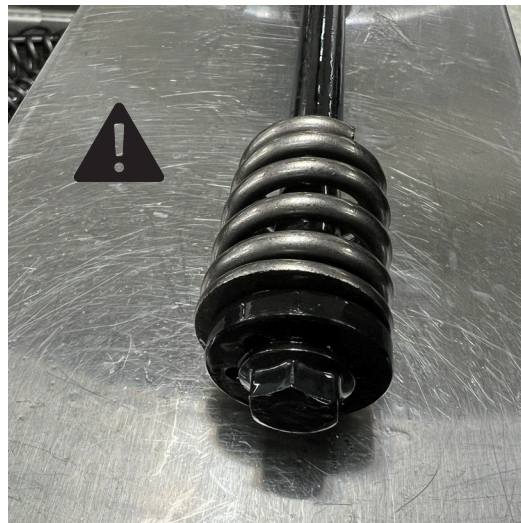


Fig. 12: **Incorrect** orientation of negative spring.

3. Inspect the copper washer on the retaining screw (Figure 13). Replace if necessary.
4. Use a 13 mm socket and extensions to hold the extender post in place. Then, use a 8 mm Allen wrench to install the damping post retaining screw (Fig. 14). Torque to 17 ft-lbs (23 N·m).
5. Carefully clamp the left fork leg into a fork vise.
NOTICE: Use care when clamping not to damage the fork leg.
6. Install the spring into the left fork leg (Fig. 15).



Fig. 13: Inspect washer.



Fig. 14: Hold the extender post. Install the retaining screw



Fig. 15: Install the spring.

7. Add 250ml of the FOX 5WT PTFE infused suspension fluid, included with kit (Fig. 16).
8. Install the preload spacer and spring washer on top of the spring (Fig. 17).
9. Compress the assembly into the fork leg using the supplied top cap (Fig. 18).
10. Use a 30 mm socket to torque the top cap to 16 ft-lbs (22 N·m) (Fig. 19).



Fig. 16: Add suspension fluid.



Fig. 17: Install preload spacer and spring washer.



Fig. 18: Compress the assembly.



Fig. 19: Torque the top cap.

FORK REASSEMBLY

RIGHT LEG (THROTTLE SIDE)

1. Ensure that you can see a circle of light through the hole in the bottom of the right fork leg, which indicates that the bottom out cup is seated correctly (Fig. 20).

TIP: Use isopropyl alcohol to clean the inside of the fork to remove all of the oil.

2. Put the negative spring on the extender post and ensure spring is oriented correctly (Fig. 11 and Fig. 12).
3. Carefully clamp the right fork leg into a fork vise. Install the cartridge assembly into the right fork leg (Fig. 21).

NOTICE: Use care when clamping not to damage the fork leg.

NOTE: The right fork leg will not get a main spring installed.

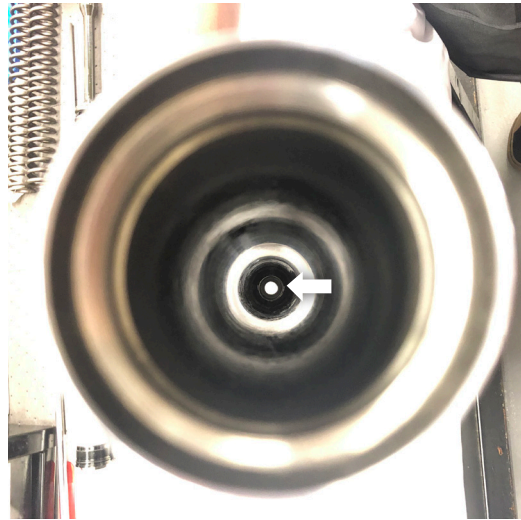


Fig. 20: Light through hole in fork leg.

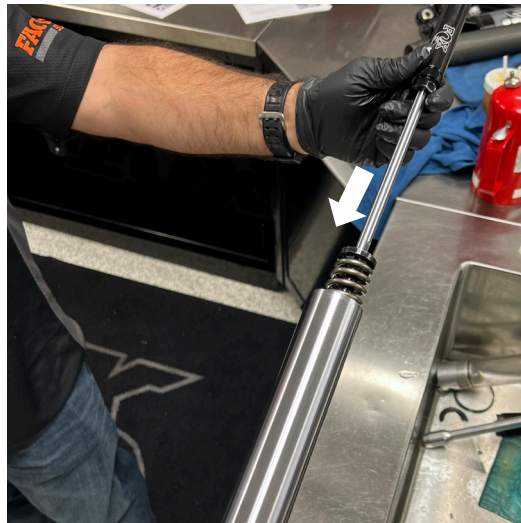


Fig. 21: Install the cartridge into right fork leg.

4. Inspect the copper washer on the retaining screw (Fig. 22). Replace if necessary.
5. Carefully clamp the lower leg in a vise and install the retaining screw and copper washer (Fig. 23). Use a 8 mm Allen wrench to torque to 17 ft-lbs (23 N·m).
6. Carefully re-clamp the lower fork tube in a vertical position. Slide the lower fork leg down to expose the cartridge.
7. Add 250ml of the FOX 5WT PTFE infused suspension fluid, included with the kit (Fig. 24).



Fig. 22: Inspect washer.



Fig. 23: Install the retaining screw.



Fig. 24: Add suspension fluid.

8. Slide the upper fork tube up until the top cap engages. (Fig. 25).
9. Use a 30 mm socket to thread the top cap into the leg and torque to 16 ft-lbs (22 N·m) (Fig. 26).
10. Install the forks back into the triple clamps. Reassemble the rest of the motorcycle completely according to your vehicle manufacturer's workshop manual before riding (not pictured).

IMPORTANT: Fork lowers will be misaligned due to the negative spring being compressed on the left leg and not on the right (Fig. 27 and Fig. 28). Use ratchet strap (or similar) to compress the left fork leg to be able to install the wheel.

NOTE: It is normal to hear some spring rubbing noise during the first few miles of use. Once the oil coats the inside of the fork, the noise should go away.

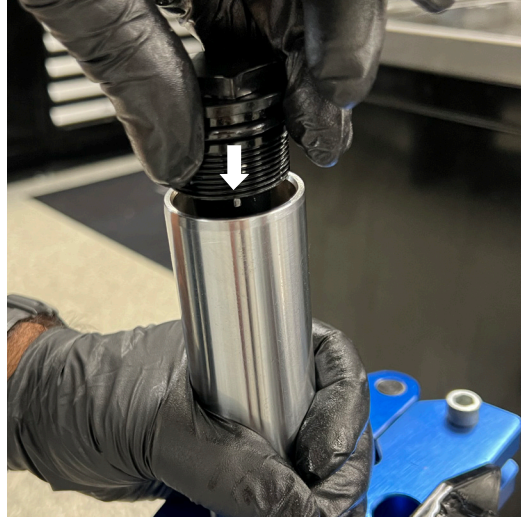


Fig. 25: Slide fork tube up until top cap engages.



Fig. 26: Torque the top cap.

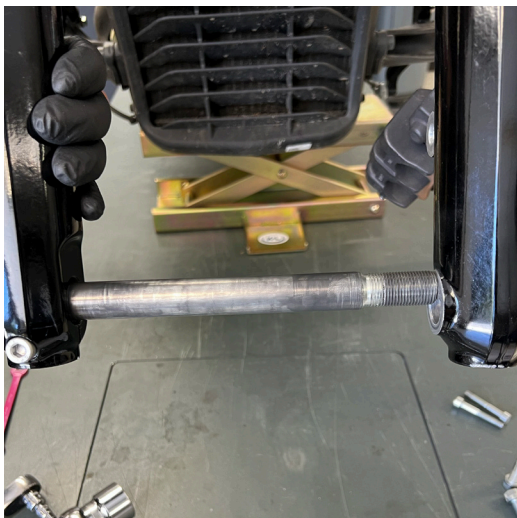


Fig. 27: Misalignment of fork lowers.



Fig. 28: Use of ratchet strap to compress fork for wheel installation.

MAINTENANCE

SEE OIL CHANGE INTERVAL LISTED IN VEHICLE SERVICE MANUAL.

PROPER INSPECTION AND MAINTENANCE IS ESSENTIAL TO MAINTAIN THE PERFORMANCE AND RELIABILITY OF YOUR FORK KIT.

It is important to keep the forks clean and free of dirt.

The service interval depends on how frequently and aggressively the motorcycle is ridden. Under normal usage, it is recommended to have the forks completely inspected and serviced annually.

FOX SERVICE AND UPGRADES

HAVE YOUR FOX SHOCKS SERVICED OR UPGRADED BY FOX TECHNICIANS. CALL OUR MOTORCYCLE SERVICE CENTER AT 831.740.4619 TO GO OVER THE SERVICE AND UPGRADE OPTIONS AVAILABLE FOR YOUR SHOCKS. ONCE YOU'VE SETUP YOUR SERVICE AND/OR UPGRADES, YOU WILL RECEIVE A RETURN AUTHORIZATION NUMBER AND SHIPPING INSTRUCTIONS.

COMPLETE SERVICES

Normal use: once per season

Racing or extreme use: may require more frequent service

SERVICE MENUS AND PRICING

visit ridefox.com/service



**WARNING: Cancer and
Reproductive Harm –**
www.P65Warnings.ca.gov

WARRANTY INFORMATION

FOX LIMITED WARRANTY

FOX Factory, Inc., a Georgia corporation having an office at 2055 Sugarloaf Circle Suite 300. Duluth, GA 30097 (“FOX”), makes the following LIMITED WARRANTY with respect to its suspension products:
LIMITED ONE (1) YEAR WARRANTY ON SUSPENSION PRODUCTS.

Subject to the limitations, terms and conditions hereof, FOX warrants, to the original retail owner of each new FOX suspension product, that the FOX suspension product, when new, is free from defects in materials and workmanship. Unless otherwise required by law, this warranty expires one (1) year from the date of the original FOX suspension product retail purchase from an authorized FOX dealer or from a FOX authorized Original Equipment Manufacturer where FOX suspension is included as original equipment on a purchased vehicle. If law requires a warranty duration of greater than one (1) year, then, subject to the other provisions hereof, this warranty will expire at the end of the minimum warranty period required by such law.

TERMS OF WARRANTY

This warranty is conditioned on the FOX suspension product being operated under normal conditions and properly maintained as specified by FOX. This warranty is only applicable to FOX suspensions purchased new from an authorized FOX source and is made only to the original retail owner of the new FOX suspension product and is not transferable to subsequent owners. This warranty is void if the FOX suspension product is subjected to abuse, neglect, improper or unauthorized repair, improper or unauthorized service or maintenance, alteration, modification, accident or other abnormal, excessive, or improper use.

Should it be determined by FOX in its sole and final discretion, that a FOX suspension product is covered by this warranty, it will be repaired or replaced, by a comparable model, at FOX’s sole option, which will be conclusive and binding. THIS IS THE EXCLUSIVE REMEDY UNDER THIS WARRANTY. ANY AND ALL OTHER REMEDIES AND DAMAGES THAT MAY OTHERWISE BE APPLICABLE ARE EXCLUDED, INCLUDING, BUT NOT LIMITED TO, INCIDENTAL OR CONSEQUENTIAL DAMAGES OR PUNITIVE DAMAGES.

This limited warranty does not apply to normal wear and tear, malfunctions or failures that result from abuse, improper assembly, neglect, alteration, improper maintenance, crash, misuse or collision. This limited warranty gives the consumer specific legal rights. The consumer may also have other legal rights which vary from state to state or country to country. Some states and countries do not allow the exclusion or limitation of incidental or consequential damages or warranties, and if dictated by law the above limitations or exclusions may not apply to you. If it is determined by a court of competent jurisdiction that a certain provision of this limited warranty does not apply, such determination shall not affect any other provision of this limited warranty and all other provisions shall remain in full effect.

THIS IS THE ONLY WARRANTY MADE BY FOX ON ITS SUSPENSION PRODUCTS AND COMPONENTS, AND THERE ARE NO WARRANTIES WHICH EXTEND BEYOND THE DESCRIPTION HEREIN. ANY WARRANTIES THAT MAY OTHERWISE BE IMPLIED BY LAW INCLUDING, BUT NOT LIMITED TO, ANY IMPLIED WARRANTY OF MERCHANTABILITY OR FITNESS FOR A PARTICULAR PURPOSE ARE EXCLUDED.

CONTACT

FOX RACING SHOX

A DIVISION OF FOX FACTORY INC.
6634 HWY 53. Braselton, GA 30517 USA
1.800.FOX.SHOX (1.800.369.7469)
ridefox.com

SALES

1.800.FOX.SHOX (1.800.369.7469)
psamsales@ridefox.com

SERVICE

13461 Dogwood Drive
Baxter, MN 56425 USA
1.800.FOX.SHOX (1.800.369.7469)
servicemn@ridefox.com

