



D1458 Installation Instructions 2023 Ram 2500 4.5" Coil Spring Kits

Read and understand all instructions and warnings prior to installation of product and operation of vehicle.

Zone Offroad Products recommends this system be installed by a professional technician. In addition to these instructions, professional knowledge of disassembly/ reassembly procedures and post installation checks must be known. Minimum tool requirements include the following: Assorted metric and standard wrenches, hammer, hydraulic floor jack and a set of jack stands. See the "Special Tools Required" section for additional tools needed to complete this installation properly and safely.

»» PRODUCT SAFETY WARNING

Certain Zone Suspension Products are intended to improve off-road performance. Modifying your vehicle for off-road use may result in the vehicle handling differently than a factory equipped vehicle. Extreme care must be used to prevent loss of control or vehicle rollover. Failure to drive your modified vehicle safely may result in serious injury or death. Zone Offroad Products does not recommend the combined use of suspension lifts, body lifts, or other lifting devices.

You should never operate your modified vehicle under the influence of alcohol or drugs. Always drive your modified vehicle at reduced speeds to ensure your ability to control your vehicle under all driving conditions. Always wear your seat belt.

»» TECHNICAL SUPPORT

www.zoneoffroad.com may have additional information about this product including the latest instructions, videos, photos, etc.

Send an e-mail to tech-zone@ridefox.com detailing your issue for a quick response.

888.998.ZONE Call to speak directly with Zone tech support.

Difficulty Level

easy 1 2 **3** 4 5 difficult

Estimated installation: 2 hours

Special Tools Required

1/2" ,3/8" Drill Bit

Tire/Wheel Fitment

See front box kit

»» PRE-INSTALLATION NOTES

1. Special literature required: OE Service Manual for model/year of vehicle. Refer to manual for proper disassembly/reassembly procedures of OE and related components.
2. Adhere to recommendations when replacement fasteners, retainers and keepers are called out in the OE manual.
3. Larger rim and tire combinations may increase leverage on suspension, steering, and related components. When selecting combinations larger than OE, consider the additional stress you could be inducing on the OE and related components.
4. Post suspension system vehicles may experience drive line vibrations. Angles may require tuning, slider on shaft may require replacement, shafts may need to be lengthened or trued, and U-joints may need to be replaced.
5. Secure and properly block vehicle prior to installation of Zone Offroad Products. Always wear safety glasses when using power tools.
6. If installation is to be performed without a hoist, Zone Offroad Products recommends rear alterations first.
7. Due to payload options and initial ride height variances, the amount of lift is a base figure. Final ride height dimensions may vary in accordance to original vehicle attitude. Always measure the attitude prior to beginning installation.
8. Kit is not designed for vehicles equipped with Rear Air Ride.

rev042123

***Important* Verify you have all of the kit components before beginning installation.**

D1458 Kit Contents

Qty	Part		
2	Coil Springs	1	Bolt Pack - T-Bar Bracket (#497)
1	Trackbar Bracket	1	Bolt Pack - Brake Line (#354)
1	2.125" Trackbar Spacer Sleeve	1	Bolt Pack - Brake Tab (#356)
2	Bump Stop Spacer		
2	15" Sway Bar Links		
4	Hour Glass Bushing		
4	Sway Bar Sleeves (5/8" OD x 1.375" Long)		
1	Brake Line Bracket		
2	Brake Line Tab		

Step 2 Note

You may need to detach the vent hose clip from the track bar bracket to prevent the nut tab from puncturing the vent hose.

INSTALLATION INSTRUCTIONS

1. Park vehicle on clean flat and level surface. Block front wheels for safety.
2. Disconnect the rear trackbar from the axle, retain all hardware. Fig 1



Figure 1

3. Raise the rear of the vehicle and support the frame rails with jack stands.
4. Remove the rear wheels.
5. Support the rear axle with a hydraulic jack.
6. Disconnect the rear sway bar links from the frame and sway bar. Fig 2



Figure 2

7. Disconnect the brake line bracket from the rear axle. Fig 3

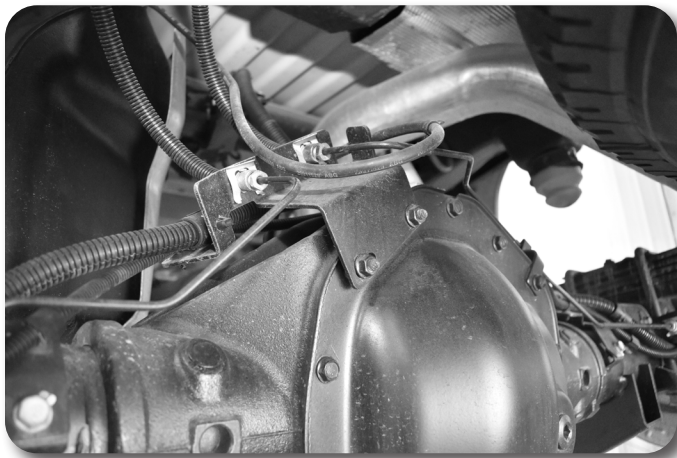


Figure 3

8. Disconnect the driver side E-brake line from the frame right in front of the rear lower arm pocket. Attach one of the brake line tabs to the factory mount using factory hardware and E-brake line to the brake line tab to lower it. Use the provided 5/16" hardware. Torque all hardware to 21 ft-lbs. Fig 4

Step 8 Note

The 5/16" hardware is located in Bolt Pack 356.

Power Hop Damper

1. The Power Hop Damper only comes on select models. Skip to Step 9 if your vehicle didn't come with one or if you choice not to upgrade to one.
2. The rear power hop damper is extremely stiff, it is easiest to leave the damper connected to the rear bracket.



Figure 4

9. Unbolt the rear power hop dampener from the top of the rear axle by removing the 4 bolts.
10. Disconnect the rear shocks and lower the axle, retain hardware. On the driver's side it is easiest to access the top hardware by cutting the inner fender well as shown. This trim procedure is not required but greatly aids in removal and installation of the shock. Fig 5, 6



Figure 5



Figure 6

11. Remove the rear coil springs and upper and lower coil spring retainers.
12. Clearance the bottom two holes in the factory track bar bracket with a 1/2" drill bit to accept 7/16" hardware. **Fig. 7A**
13. Install the trackbar bracket on to the axle. First place the 2-1/8" long sleeve and place it inside the track bar bracket at the factory track bar bolt location using the provided 9/16" x 4" hardware. **Fig. 7B** Using the 7/16" x 1-1/2" bolts, washers, and flange nuts attach the bracket through the bottom holes. **Fig. 7A**



Figure 7A

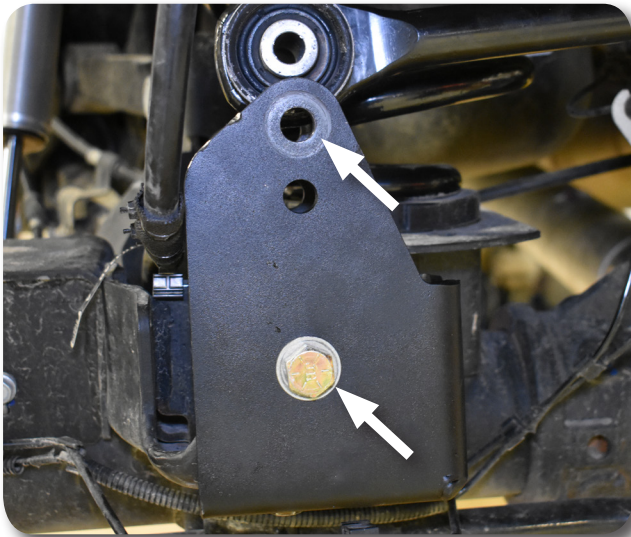


Figure 7B

14. Tighten the trackbar bracket hardware as follows: 14mm factory hardware 140 ft-lbs, 7/16" hardware 70 ft-lbs.
15. Install the new coil springs with OEM isolators. Raise the axle and ensure that the isolators are centered over the factory mounts. Orientate the coils so that the lower locating tab is at the rear of the vehicle. **Fig 8**

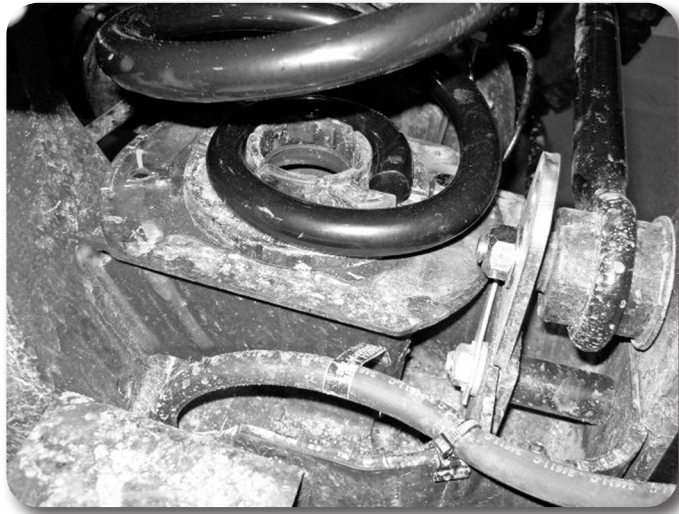


Figure 8

16. Open up the hole rearward of the OE shock hole inside the frame to 3/8" with a drill bit. Install the shock eliminator bracket onto the shock using hardware in bolt pack 946 included in the shock box. Tighten the 1/2" eliminator hardware to 75ft-lbs. Install the shocks into the vehicle. Tighten the 3/4" eliminator hardware to 120ft-lbs Fig. 9



Figure 9

17. Grease the bushings and sleeves and install them into the sway bar links. Install the sway bar links with the new 12mm hardware. (BP 497). Tighten to 45 ft-lbs. Fig 10

Step 17 Note

Sway bar hardware (12mm x 65mm) is in #497

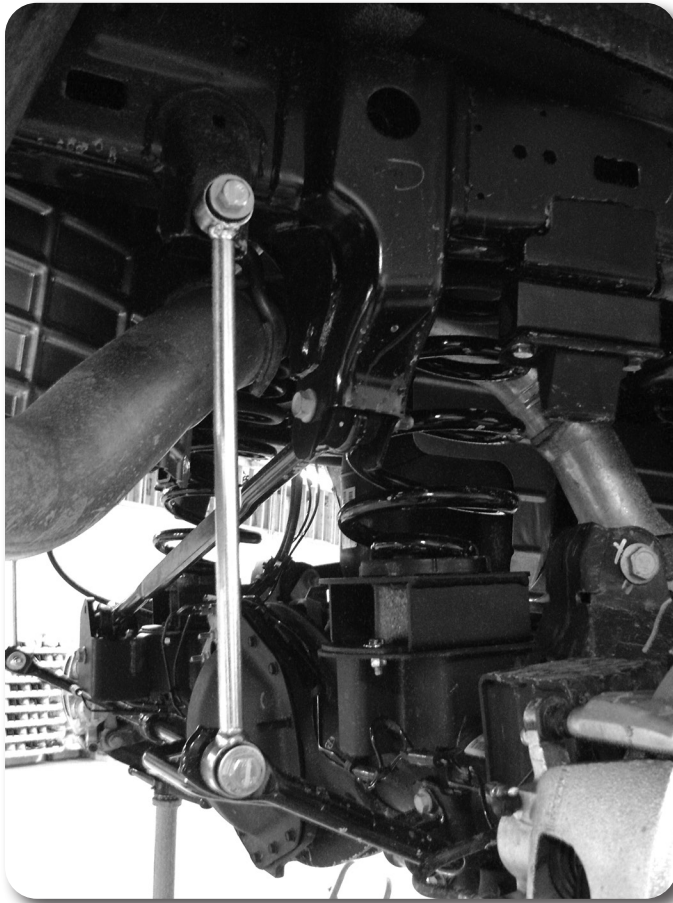


Figure 10

18. Remove the factory bump stops. Install the bump stop drop brackets with new 10mm hardware (BP 497). Install so the small holes are to the inside of the vehicle. Tighten to 35 ft-lbs. Fig 11, 12

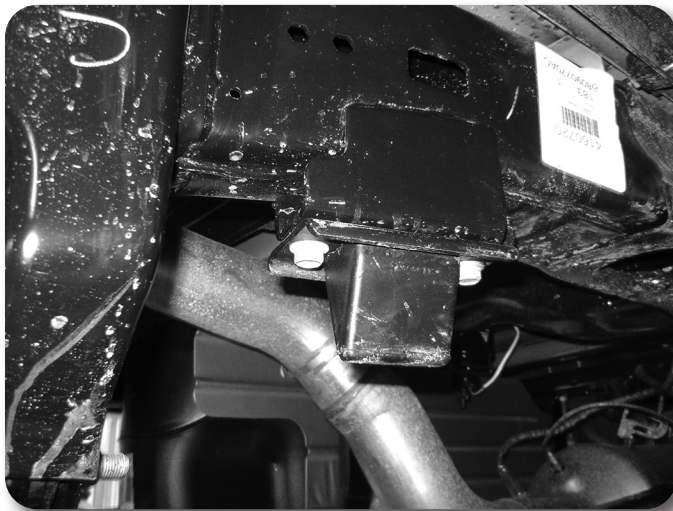


Figure 11

Step 18 Note

Bump stop hardware is in bolt pack #497



Figure 12

19. Remove the passenger side brake hard-line from the passenger side of the differential cover. Fig 13

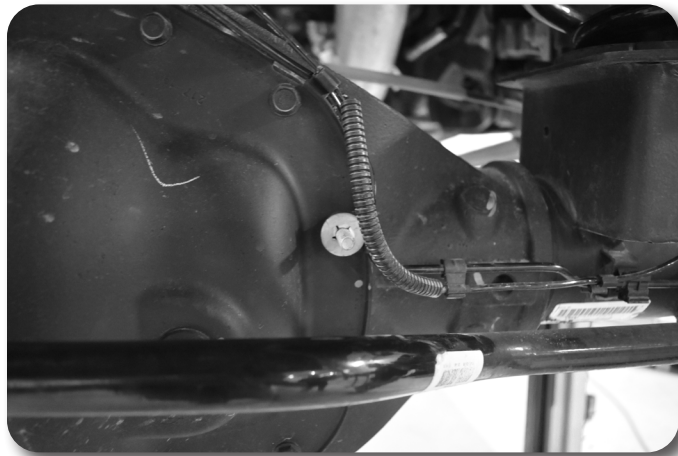


Figure 13

Step 20 Note

Brake line tab hardware is in bolt pack #354

20. Attach the supplied brake line tab to the passenger side hard line with the supplied 5/16" hardware and then the tab to the differential cover with the supplied washer and 8mm nut. Torque all hardware to 21 ft-lbs Fig 14

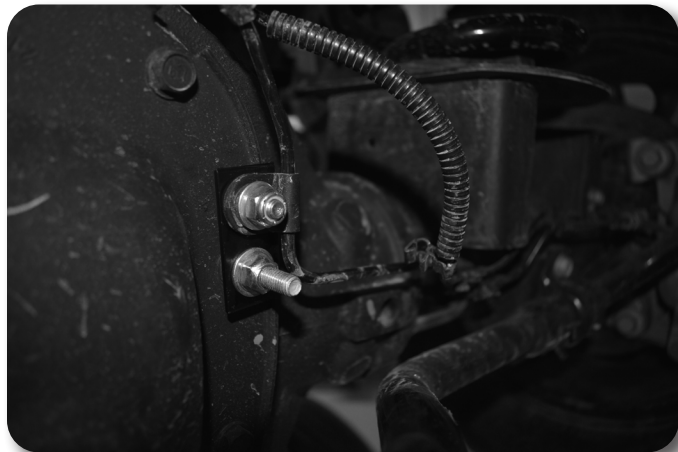


Figure 14

21. Attach the supplied rear brake line bracket to the top of the rear differential cover with factory hardware. Torque to 12 ft-lbs. Use the provided 3/8" hardware and fasten the factory brake line bracket to the supplied brake line bracket. Torque hardware to 26 ft-lbs

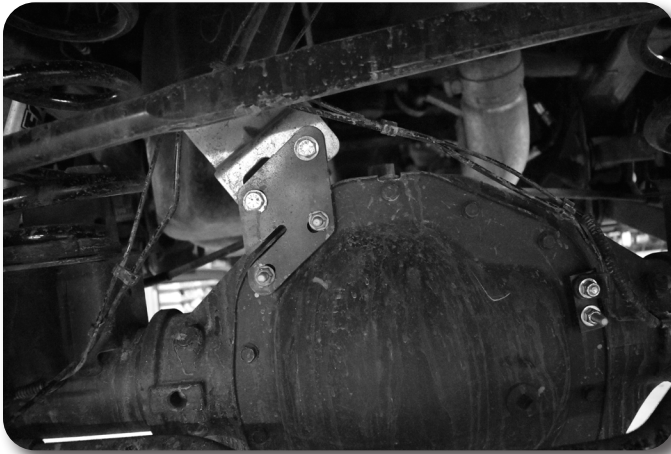


Figure 15

22. Attach the rear power hop damper to the top of the rear axle housing with the 4 provided 1/2" spacer and 10mm bolts and washers. Torque all hardware to 48 ft-lbs (Figure 16)



Figure 16

23. Reinstall wheels, if installing aftermarket wheels it is recommended to remove all of the rotor retaining clips to allow the wheel to sit flush against the rotor. Tighten to factory specifications.
24. Lower vehicle to the ground.
25. Attach the trackbar to the top hole of the new bracket using the factory trackbar bolt and nut tab. It may be necessary to have an assistant push on one side of the truck slightly to get the holes aligned. Tighten to 154 ft-lbs.
26. Recheck all hardware for proper torque, check again after 500 miles.

Step 21 Note

Brake line bracket hardware is in bolt pack #356

Step 22 Note

Power hop damper hardware is in Bolt Pack 695 which is located in box D5624 along with the spacers.

Post-Installation Warnings

1. Check all fasteners for proper torque. Check to ensure for adequate clearance between all rotating, mobile, fixed, and heated members. Verify clearance between exhaust and brake lines, fuel lines, fuel tank, floor boards and wiring harness. Check steering gear for clearance. Test and inspect brake system.
2. Perform steering sweep to ensure front brake hoses have adequate slack and do not contact any rotating, mobile or heated members. Inspect rear brake hoses at full extension for adequate slack. Failure to perform hose check/ replacement may result in component failure.
3. Perform head light check and adjustment.
4. Re-torque all fasteners after 500 miles. Always inspect fasteners and components during routine servicing.