

**SIMPLY SUPERIOR.**

www.jksmfg.com | jks@sporttruckusainc.com | 517-278-1226

## SHOCK ABSORBERS

RV. 091115

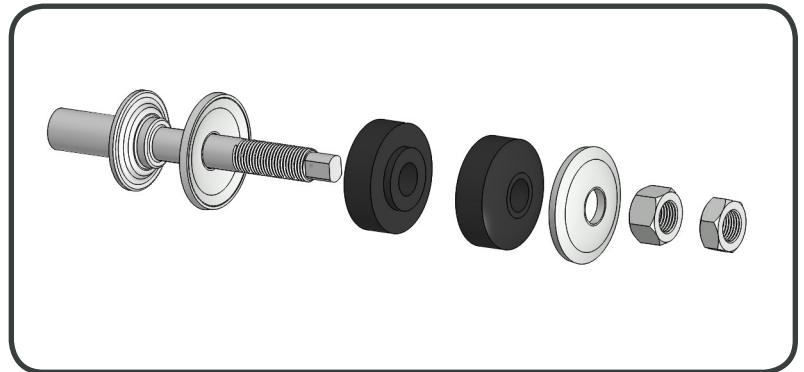
## INSTALLATION INSTRUCTIONS

- Park vehicle on a clean, flat, and level surface. Block the wheels for safety.
- Remove old shocks from the vehicle. Note: If this installation is being performed on a hoist, or with the axle hanging, the axle must be well supported. Keep all spacers, washers, sleeves, and any other hardware that is removed.

### CAUTION

***JSpec shocks are gas charged and will extend on their own. These shocks must always be installed with the body down to ensure the valve is submerged in oil for proper operation.***

- Remove the strap holding the shock collapsed.
- Stem bushing components are included in a bag kit. Assemble the stem bushing to the vehicle as shown in the diagram with the vehicle mount between the two stem bushings. When tightening a stem bushing assembly, tighten the nut until the bushings begin to expand. 3/8", 10mm, and 12mm stems will require a jam nut to secure the nut. Lock the jam nut off securely.
- JSpec shocks come with eye bushings, sleeves, and/or bar pins pre-installed from the factory for the correct application. Install the shocks to the vehicle with the factory hardware. Tighten shock eye or bar pin hardware to OE specifications.
- Be sure to check clearance of the shock through full wheel travel to ensure there is no contact between the shock and any other part.
- Recheck all fasteners after 500 miles of driving.



If you encounter any problems with your installation and setup, please contact JKS Manufacturing for technical assistance.

### JKS Technical Support

|        |                 |
|--------|-----------------|
| Phone  | 517-278-1226    |
| E-Mail | tech@jksmfg.com |



### ATTENTION INSTALLER

***To prevent the coil springs from becoming unseated during maximum suspension extension, correct length shock absorbers must be installed.***

## WARRANTY NOTE

Shock oil seals are subject to wear over time, and use, and are not covered under the warranty. Some oil weepage from the seal is normal. Leaking shock seals that are less than one year from date of purchase, free from contamination, damage, or abnormal seal wear due to misuse can be considered for coverage under our warranty.